

Visual QR Code Generator

User Manual

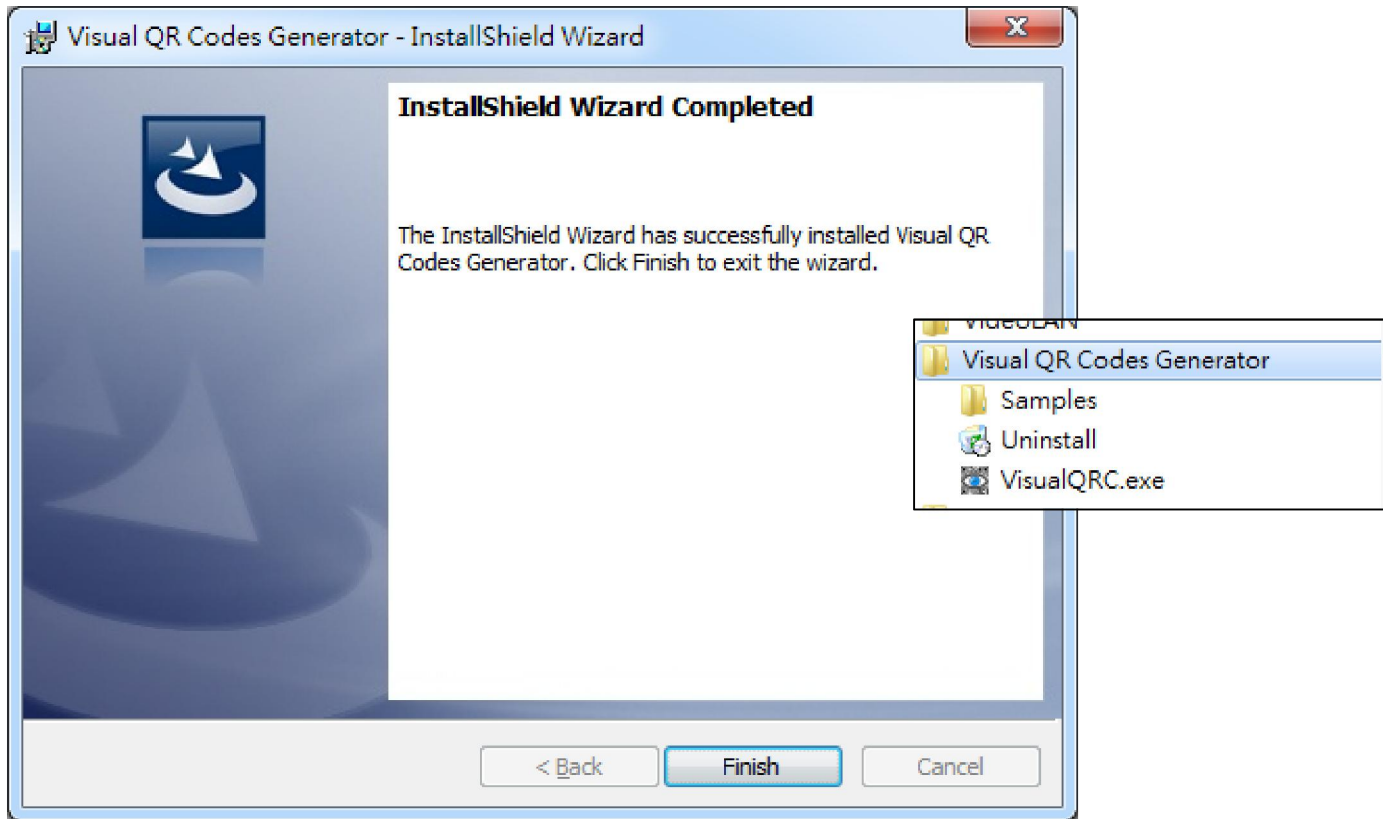
Table of Contents

1. [Installation](#)
2. [Recommended Barcode Readers](#)
3. [A Quick Start](#)
4. [Expert Mode](#)

INSTALLATION

Installation

- Run “Setup.exe”




- Tested platforms
 - Windows XP (32 bits)
 - Windows 7 (32/64 bits)

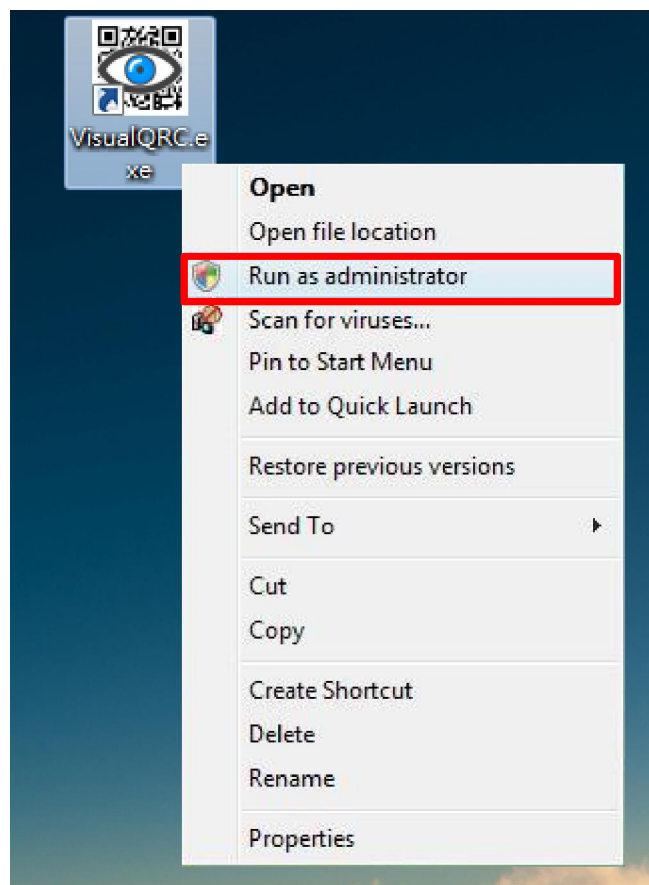
RECOMMENDED BARCODE READERS

Barcode Readers

- NeoReader:
 - [iTunes App Store](#)
 - [Google Play](#)
 - [Windows Marketplace](#)
 - [Blackberry App World](#)
- ZBar:
 - [iTunes App Store](#)
- i-Nigma
 - [iTunes App Store](#)
 - [Google Play](#)
 - [Windows Marketplace](#)
 - [Blackberry App World](#)

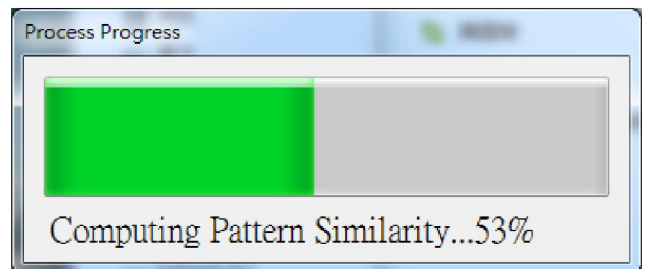
Before we get started...

- To run the program, right click the icon  and select “Run as administrator”.



In the beginning...

- Please wait for few seconds until system finishes the pair-wise pattern similarity distance computation.

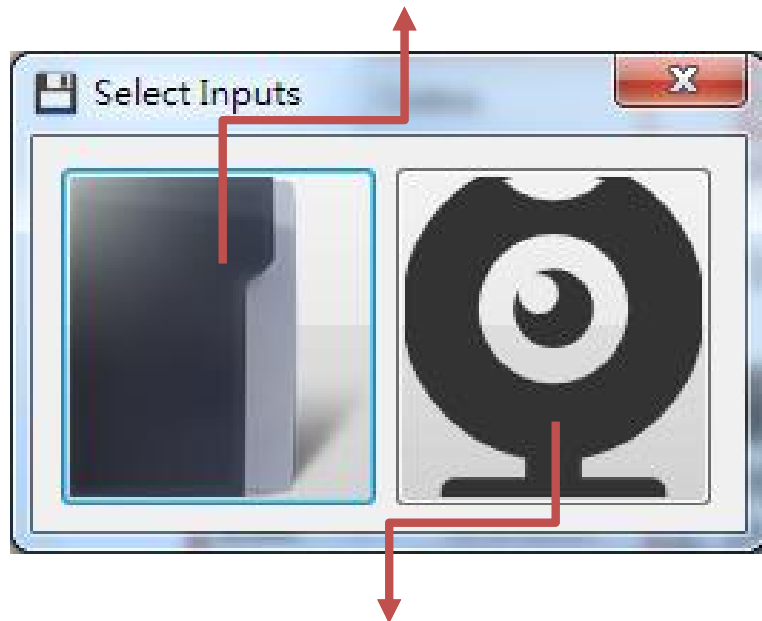


A QUICK START

Select Inputs

- Determine the visual content (image/video) you want to embed in the QR code

Open a file or drag-and-drop a file to the button.

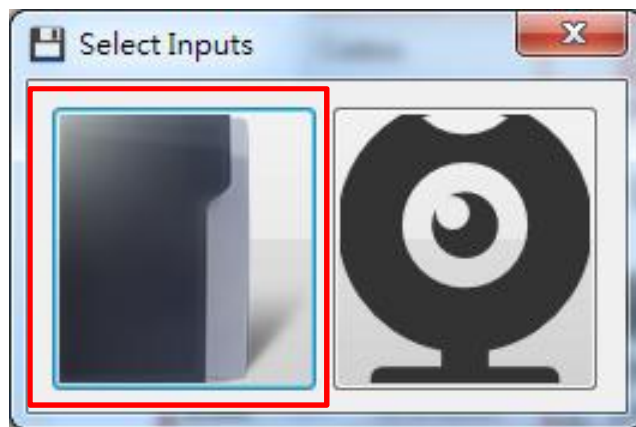


Open the default USB camera device

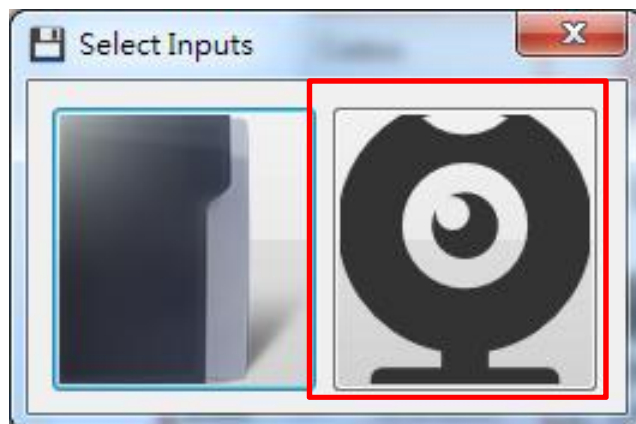
- Support following file extensions
 - bmp, jpg, png, tif, avi, wmv

Options

- Click the left button to open the image/video from file. (Go to p.12)

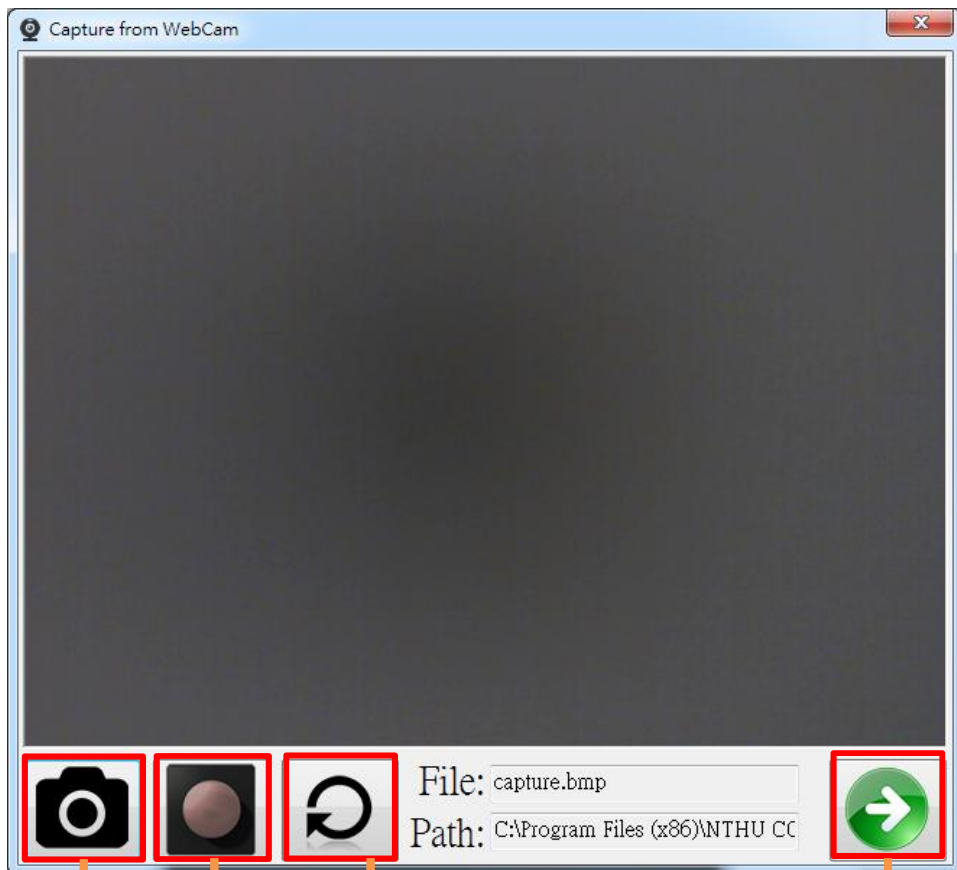


- Click the right button to open the image/video from file. (Go to p.11)



Capture from WebCam

- After capturing a frame or recording a video clip, please click the “Go to next step”



Capturing a frame

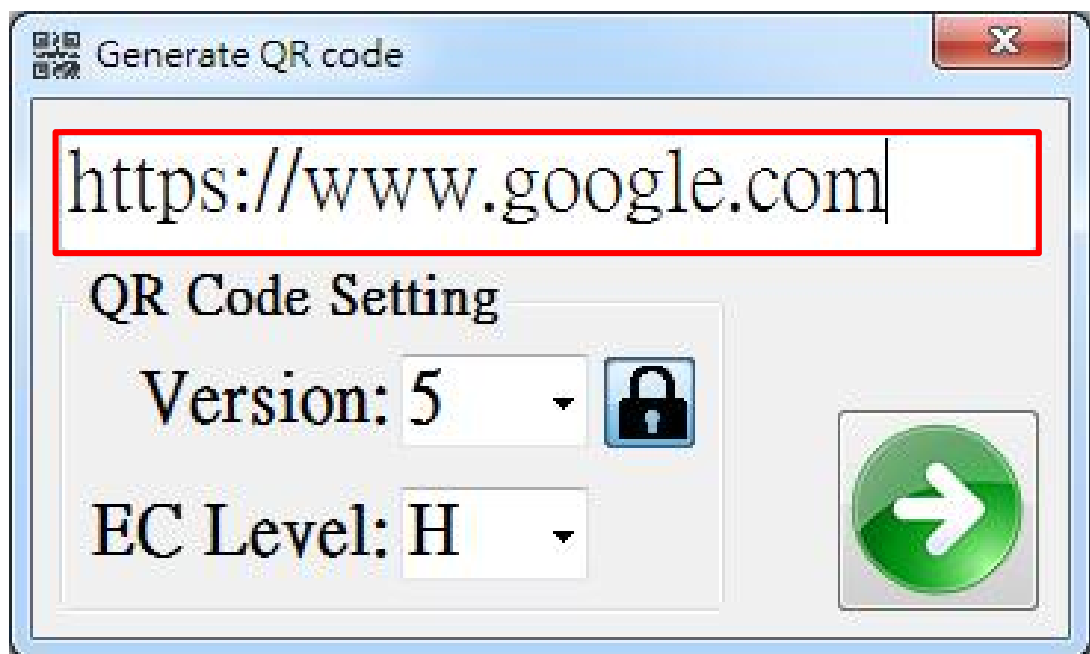
Recording the frames

Reset

Go to next step

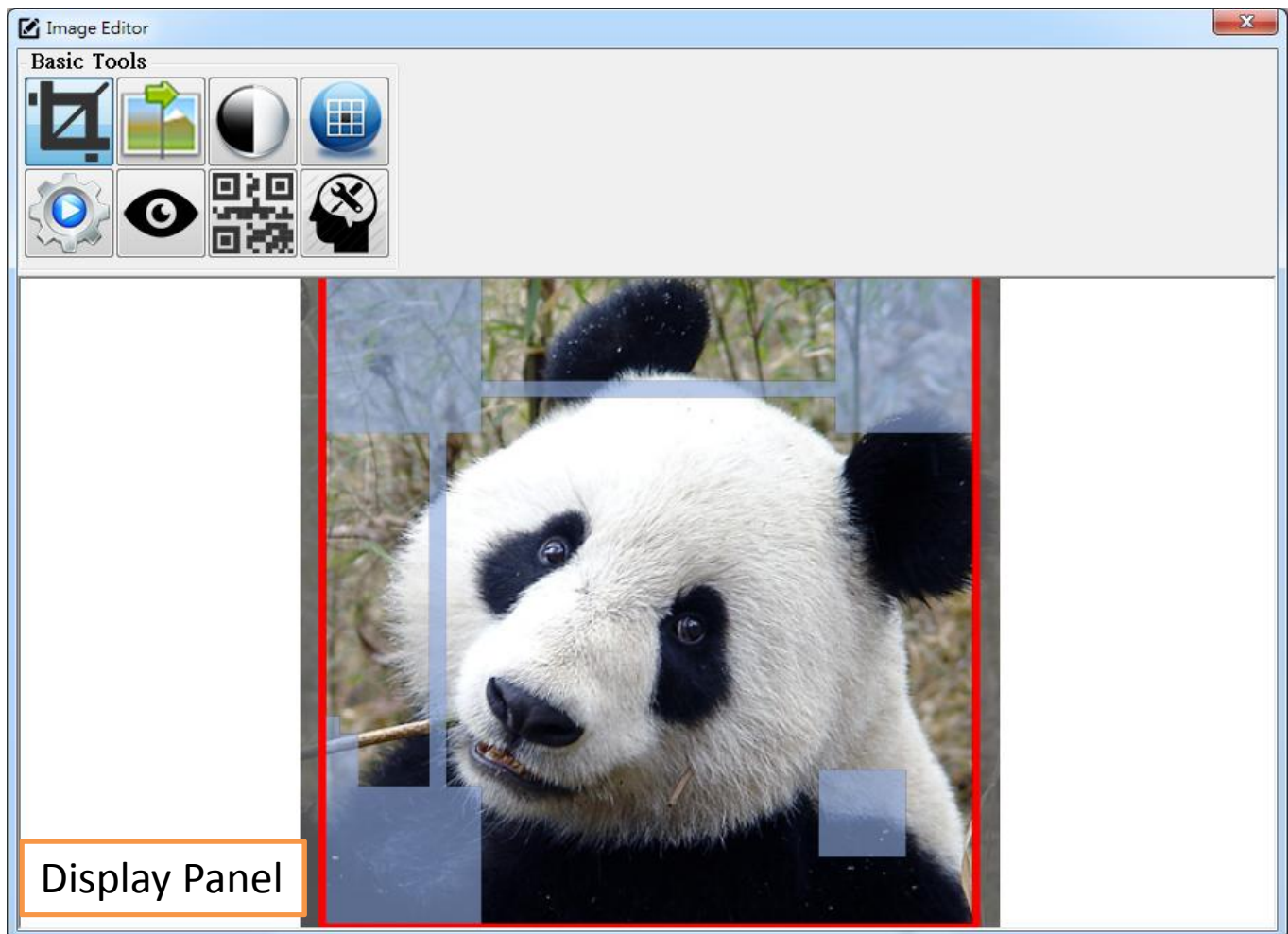
Generate QR Code

- Specify QR code parameters
 - Data string, QR code version and error correction level
- Click the “Go to next step” button



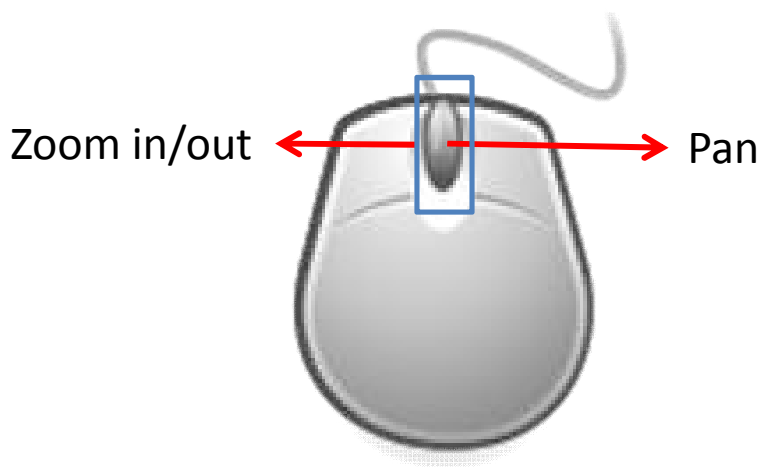
The screenshot shows a window titled "Generate QR code" with a standard Windows-style title bar (minimize, maximize, close buttons). Inside the window, there is a text input field containing the URL "https://www.google.com", which is highlighted with a red rectangular border. Below the input field, the text "QR Code Setting" is displayed. Under this heading, there are two dropdown menus: "Version: 5" and "EC Level: H". To the right of the "Version" dropdown is a small blue padlock icon. To the right of the "EC Level" dropdown is a small green circular button with a white right-pointing arrow, representing the "Go to next step" button mentioned in the instructions.

Image Editor



Display Panel

- Zoom in/out:
 - Mouse wheel.
- Panning:
 - Press **middle** mouse button and move the mouse.



Basic Tools



Generate halftone QR code



Enter cropping mode:

Operation "mouse right click + move" : Resize the ROI

Operation "mouse left click + move" : Move the ROI



Apply constrast enhancement

(Right click the button to call the parameters dialog)



Apply unsharp mask filter

(Right click the button to call the parameters dialog)



Enhance the result based on image features and user strokes (see p.23)



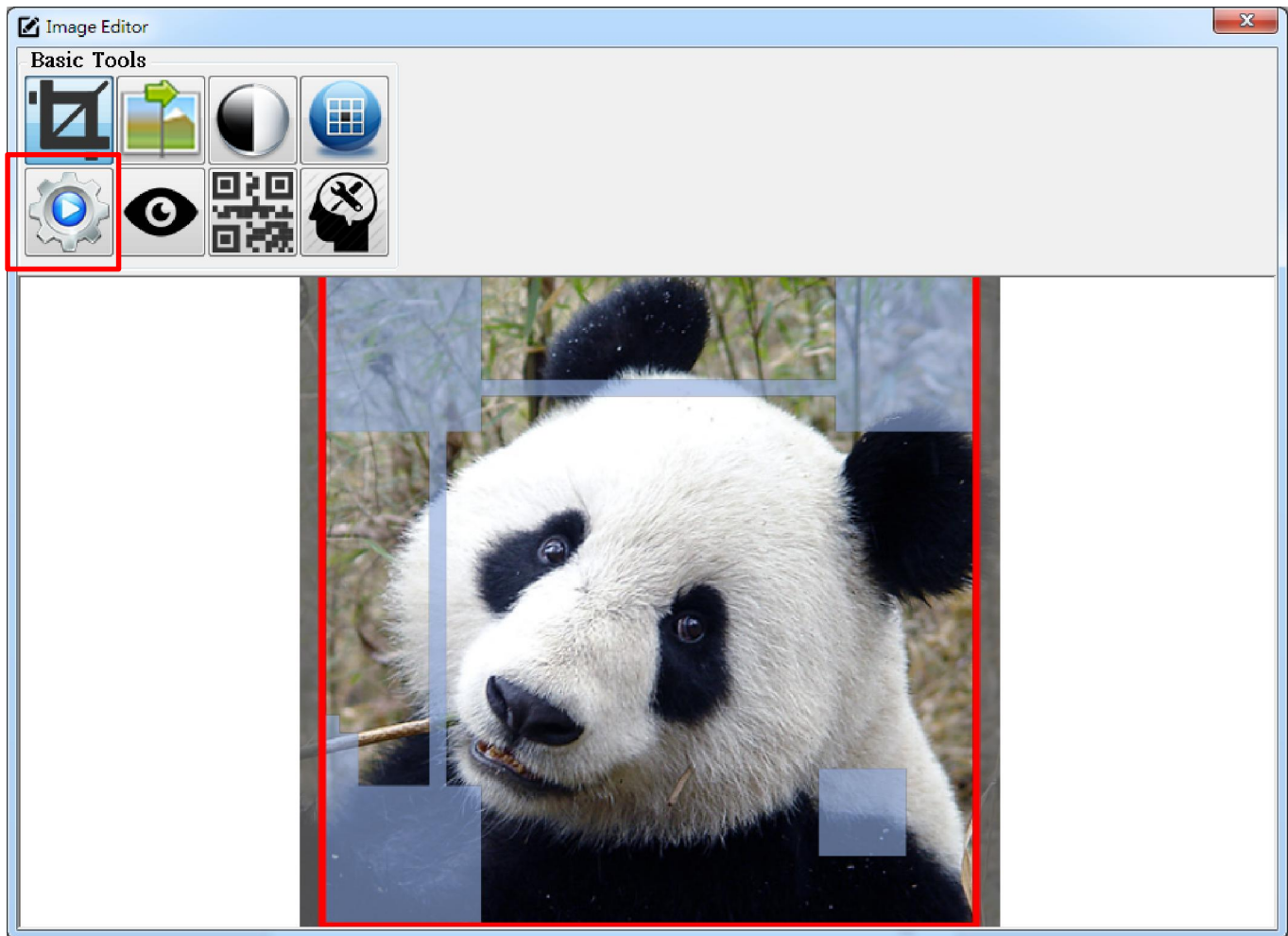
Go back to QR code generator



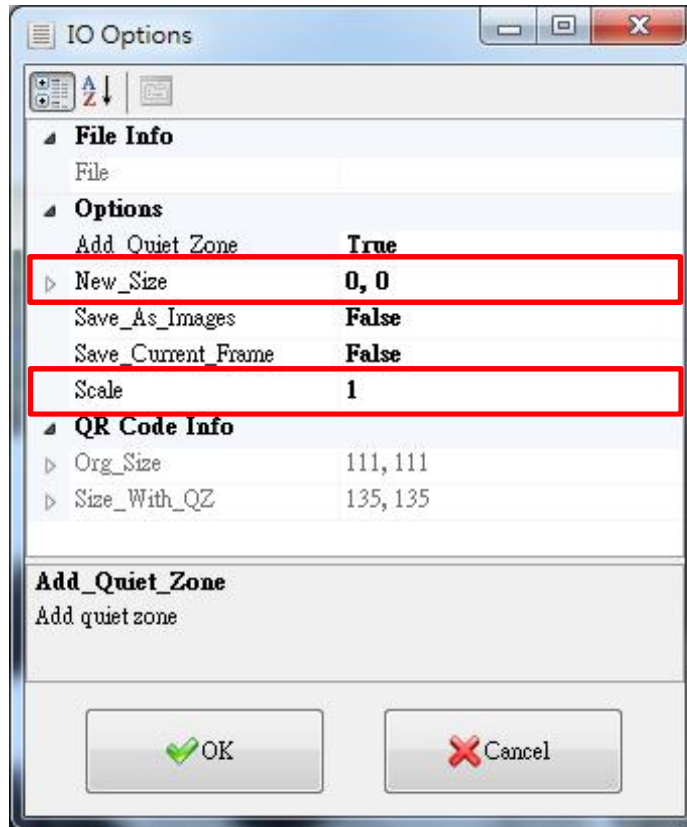
Enter expert mode (see p.19)

Image Editor

- Click  button to generate a result.



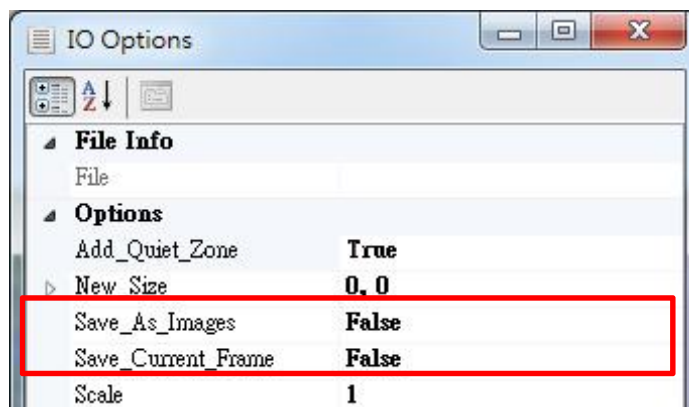
I/O Options



- Specify the target image size via “New_Size” or “Scale”
- Click “OK” button
- Save as a target file

I/O Options

- If the input is a video clip.
- Enable “Save_As_Images” to save resultant QR codes as sequence of images.
- Enable “Save_Current_Frame” to save just the result generated by current video frame.

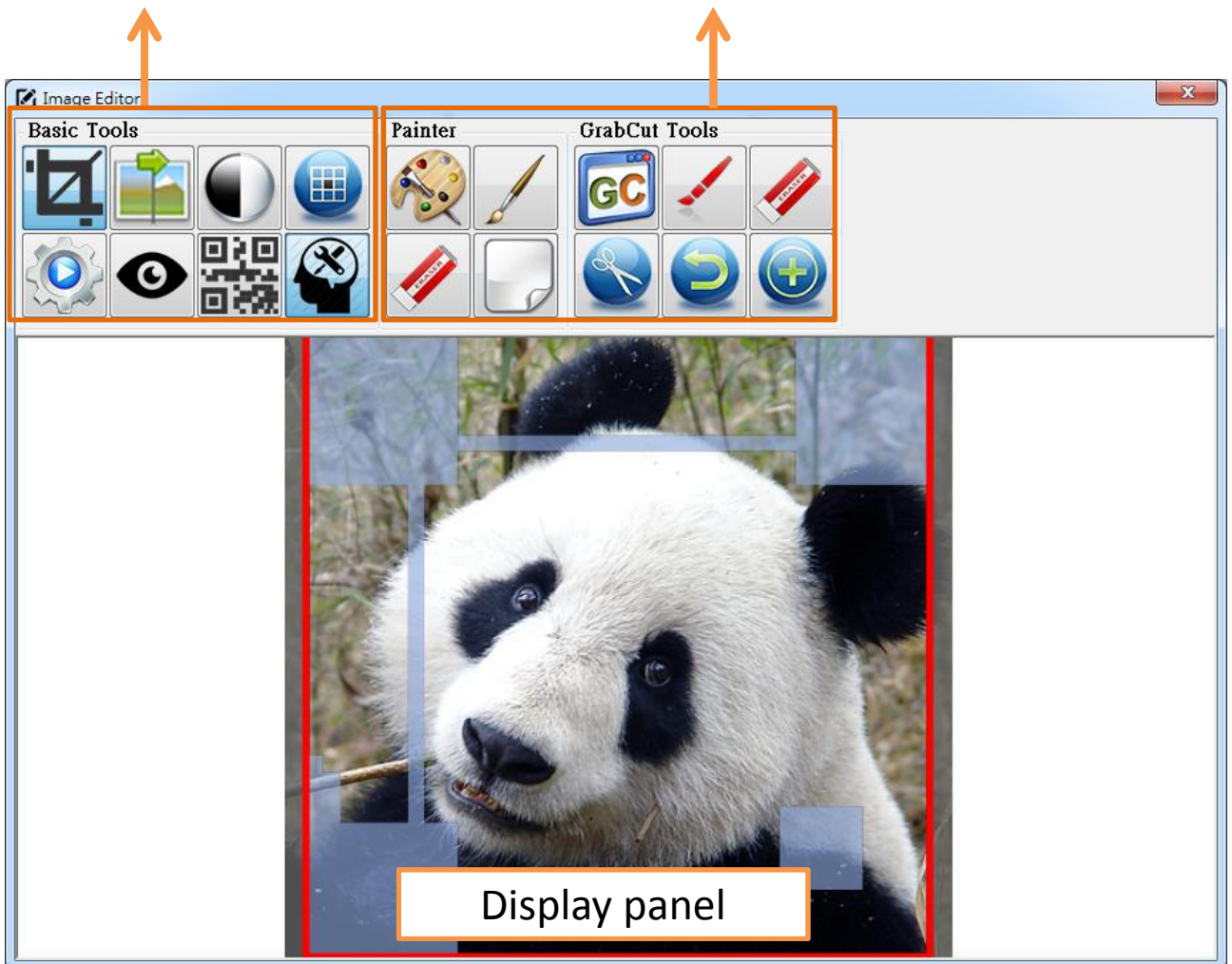


EXPERT MODE

Image Editor

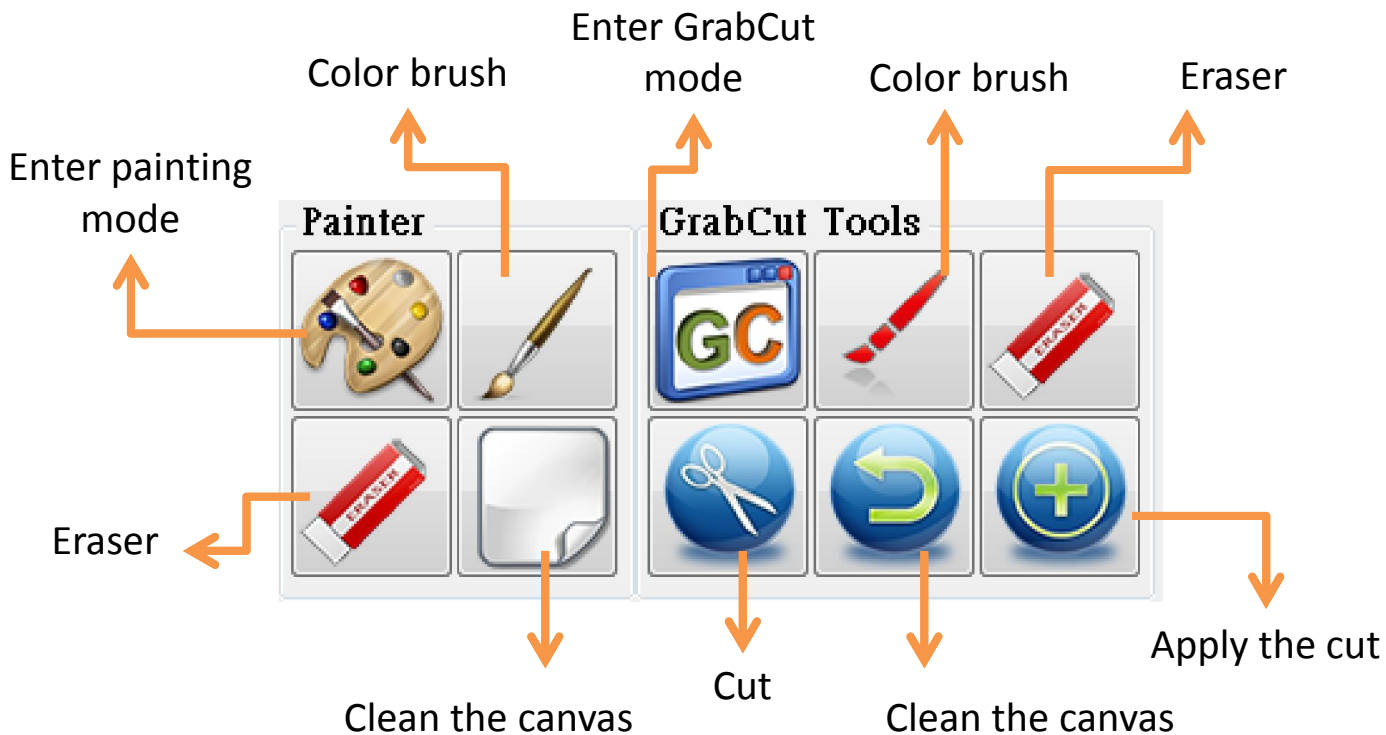
Express mode :
Basic Tools

Expert mode :
Painter/GrabCut Tools



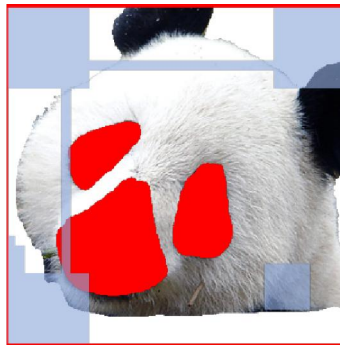
Expert Mode


- Click  button to enter expert mode.



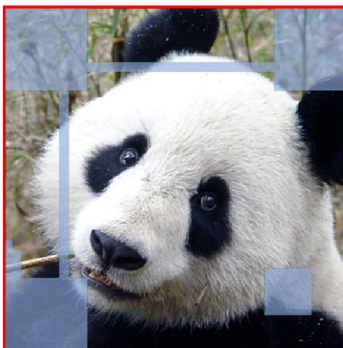
Expert Mode

- Use the painting tools to specify important visual features.

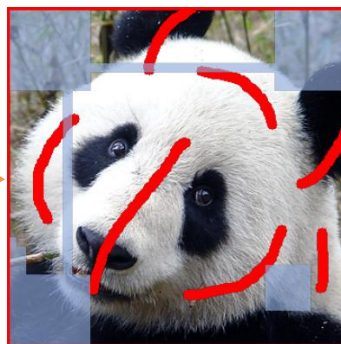


Remember to click  to apply the enhancement

- Use the GrabCut tool to create transparent background.



Original image




Draw strokes

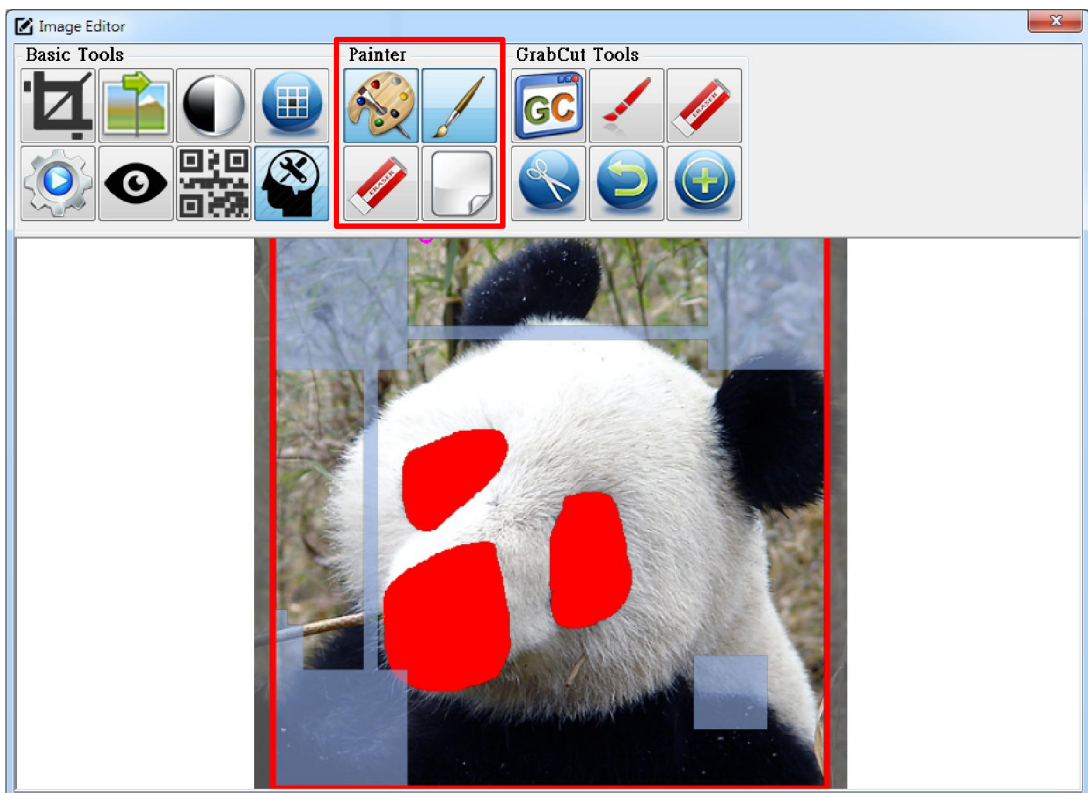
cut





Apply the cut

Enhancement

- Click  button to enter painting mode.
- Paint whatever regions you want using the brush tool.



GrabCut

- To create transparent background, Click  button to enter GrabCut mode.
- Click  button to draw strokes on the foreground. Or Right click the button to switch between different brushes.



Use to draw strokes on the foreground



Use to draw strokes on the background



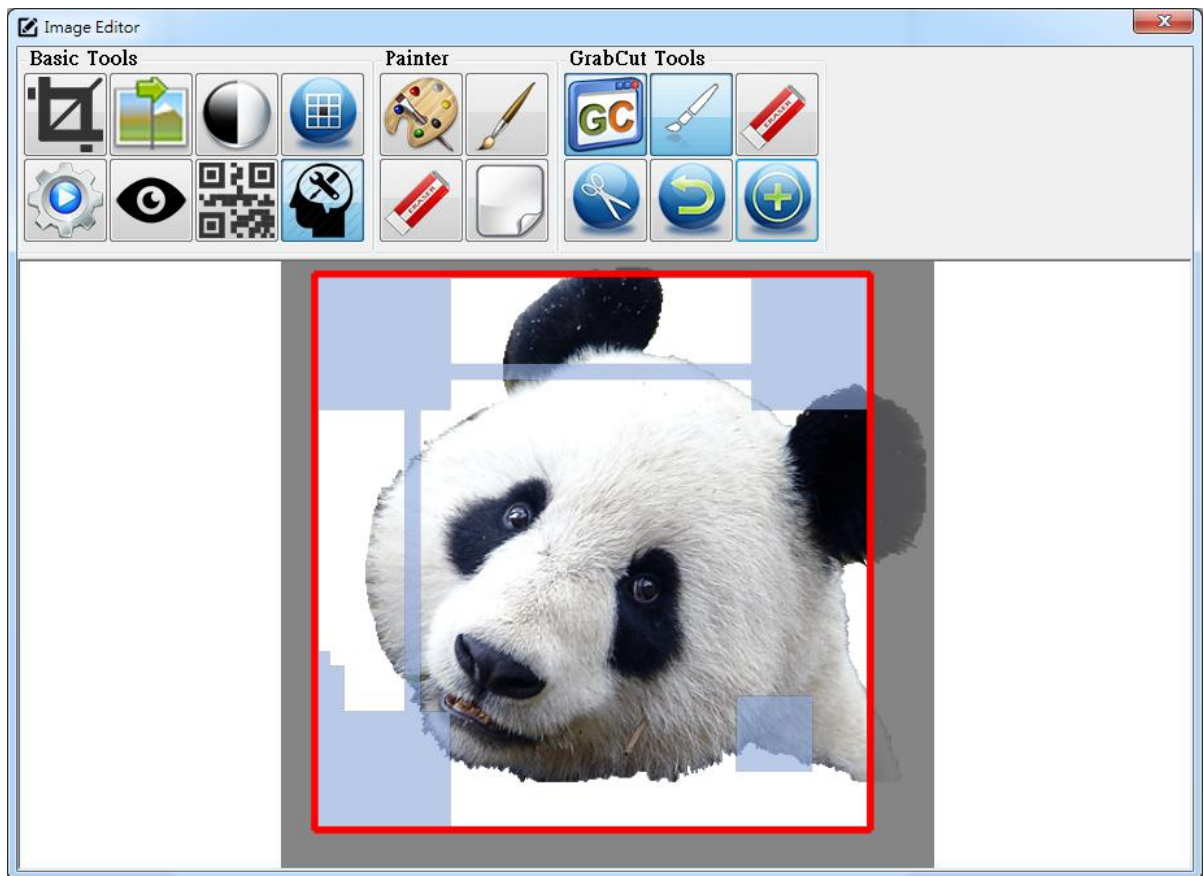
Use to paint the background region



Use to paint the foreground region

GrabCut

- Click  button to perform GrabCut.



Basic Image Enhancement

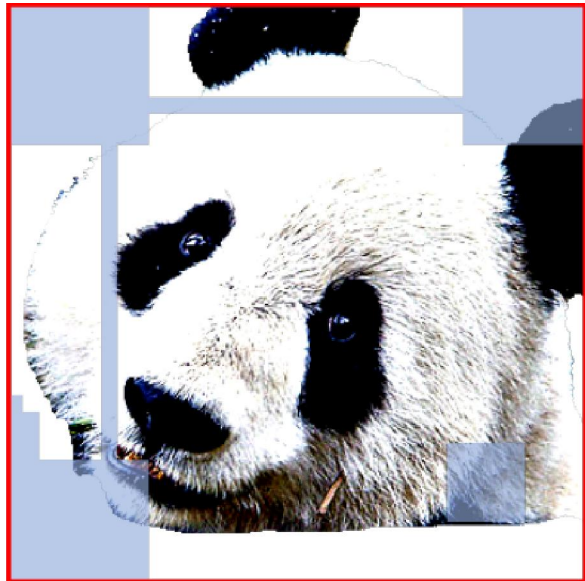
- If the image has low contrast, we provide two handy tools to quickly enhance the image. (Right click the button to call the parameters dialog)



Contrast enhancement

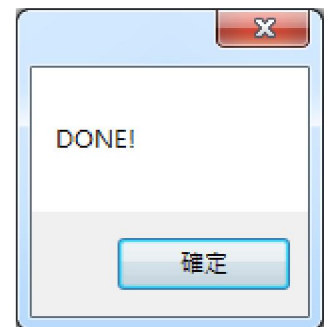


Unsharp mask



Last...

- Click  button to generate and save result.



Notes

- This program is permitted to use/distribute for **non-commercial** and **academic research** purpose.
- This program is compiled with un-optimized research codes, so please be gentle with it... 😊
- Feel free to contact us if you have any questions about the program
 - Hung-Kuo Chu (James):
hkchu@cs.nthu.edu.tw
 - Chia-Sheng Chang (John):
sulaispig@gmail.com

Thank You